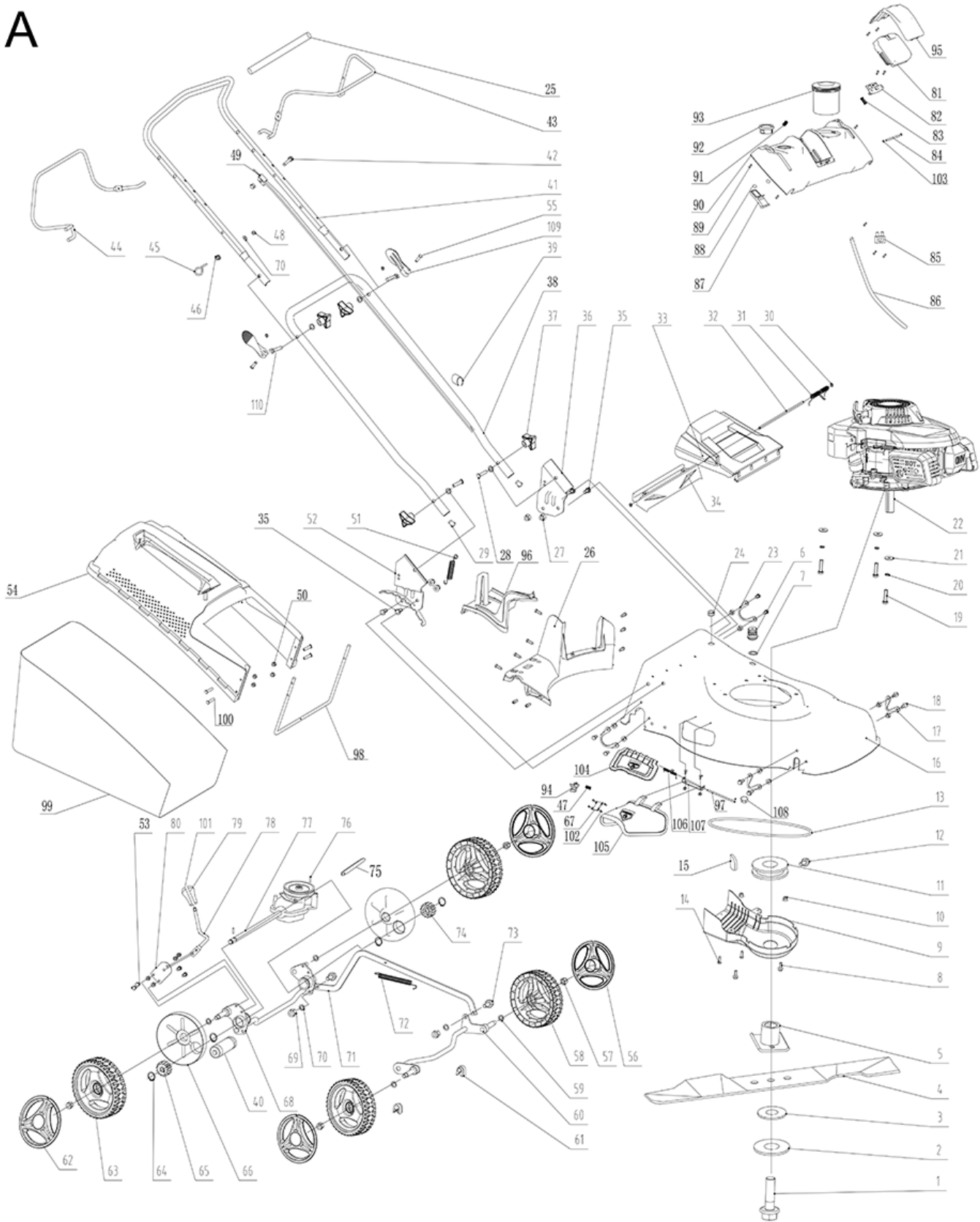


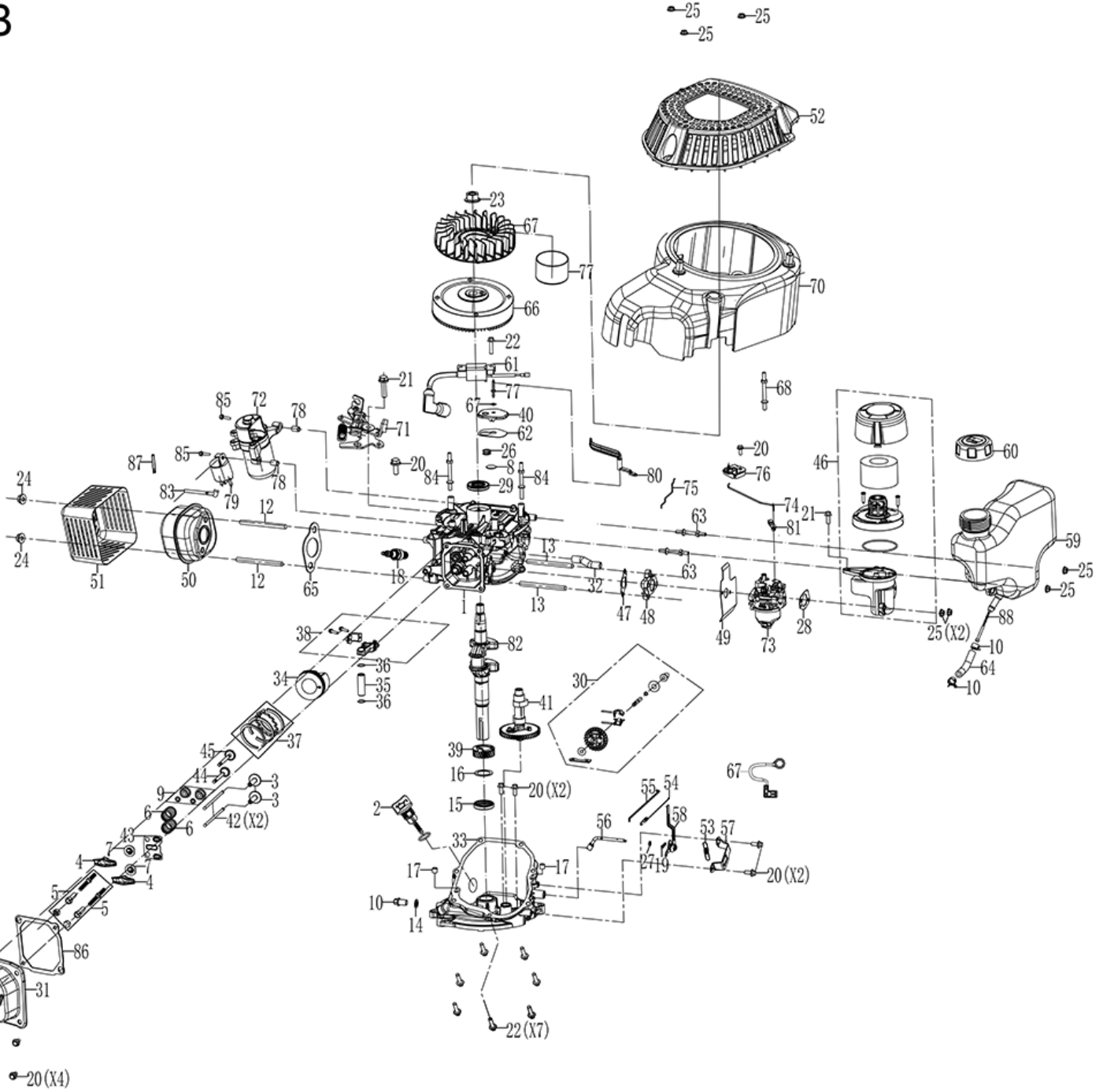


A





**B**



**Main products**

5911244903

**Spare part list**

155070 - 0162 - MS150-46E - alter Motor / alter Akku - bis 11 - 2020

Spare	Description	additional	Item	Abb.	ConstructStatus
5911240001	Bolt	Part A1	1	A	*
3911202002	Dish Washer	A10	2	A	*
5911240002	Gasket for Blade Attachment		3	A	*



5911244903

Lawn mower MS150-46E scheppach - 3.7HP - 460mm



**Main products**

**Spare part list**

5911244903

155070 - 0162 - MS150-46E - alter Motor / alter Akku - bis 11 - 2020

Spare	Description	additional	Item	Abb.	ConstructStatus
7911200617	18" blade s spare parts, no brand MP141-46	MP141-46 / MP150-46	4	A	*
7911200626	18" plastic packaging blade, Scheppach brand	MP141-46 / MP150-46	4	A	Scheppach Verpackung
5911249001	Blade Adapter		5	A	*
5911240011	hose connection	with O-Ring and ratchet nut with flange M14x1,5	6,7	A	*
5911244001	Belt Cover		9	A	*
5911241002	Variable Speed Driving Belt Pulley		11	A	*
5911241004	V-Belt	V-Belt Z-750 x 9,5x6	13	A	*
5911244002	Engine	Until 11.2020	22	A	*
5911244003	Pentagon Knob cpl.		28,37	A	*
5911238024	Torsion Spring for Rear Cover Plate		31	A	*
5911238023	Shaft for Ejection Flap		32	A	*
5911240008	discharge flap rear	RAL3020	33	A	*
5911238003	Chassis Block		34	A	*
5911240009	screw-on bow		38	A	*
5911245002	Handle		41,25	A	*
5911240018	Gas Throttle	RAL3020	43	A	*
5911241013	Drive Rod Part A47		44	A	*
5911245012	Flameout double Cable	Z-Haken / 1380mm / 1450mm	49	A	*
5911246004	catcher basket cover		54	A	*
5911244004	catch basket		54,98-100,50	A	*
5911240024	Front Wheel Cover		56	A	*
5911240017	Push Wheel	Ø177	58	A	*
5911238021	Front Wheel Axle	MS161-46 Part 60	60	A	*
5911240012	Wheel Cover	Ø177	62	A	*
5911238007	Wheel	Ø200mmx55mm	63	A	*



5911244903

Lawn mower MS150-46E scheppach - 3.7HP - 460mm



**Main products**

**Spare part list**

5911244903

155070 - 0162 - MS150-46E - alter Motor / alter Akku - bis 11 - 2020

Spare	Description	additional	Item	Abb.	ConstructStatus
5911241021	Right Output Gear		65	A	*
5911238020	dustproof wheel cover		66	A	*
5911238022	Back Wheel Axle		68	A	*
5911238027	connecting rod fixing bolt		73	A	*
5911241023	Left Output Gear		74	A	*
5911238009	Transmission		77	A	*
5911238008	Handle for Height Adjustment Part A67+76+77		78-80,53,101	A	*
7911200711	Battery BP2.0A-Li12V		81	A	*
5911245003	E-Start with Control Panel cpl.	nur für 12V Akku	82-93,95,103	A	*
5911244005	Wire Harness Assembly		86	A	*
5911246002	Lithium Battery Startup Panel		90	A	*
5911245005	Lithium Battery Startup Switch		92	A	*
5911245004	Lithium Battery Cover		95	A	*
5911238010	Mulching Plug		96	A	*
5911244006	catch basket rods		98	A	*
5911238006	catch basket net		99	A	*
5911240005	discharge flap lateral		104	A	*
5911240006	discharge flap pluggable		105	A	*
5911244007	Stargrip Screw		109-111	A	*
7911200712	Battery charger BC1.5A-Li12V		o.Abb.	A	*
5911249022	Oil Gauge Assembly	Ø27 x 63	2	B	*
5911249023	oil drain screw with O-Ring	M10x1,25x15	11,14	B	*
3906201048	spark plug	F6TC	18	B	*
5911249025	speed control		30	B	*
5911249026	Cylinder Cranium		31	B	*



5911244903

Lawn mower MS150-46E scheppach - 3.7HP - 460mm



**Main products**

**Spare part list**

5911244903

155070 - 0162 - MS150-46E - alter Motor / alter Akku - bis 11 - 2020

Spare	Description	additional	Item	Abb.	ConstructStatus
5911238012	Piston Part B20		34	B	*
5911240028	Piston Rings (1 Set = 5 pcs.)		37	B	*
5911249027	Connecting Rod		38	B	*
5911249029	Camshaft Assembly		41	B	*
5911249030	Air Filter Element		46	B	*
5911249024	Carburetor Gasket Set	4-teilig	47-49,28	B	*
5911249033	exhaust	Euro5	50	B	*
5911249034	Muffler Housing		51	B	*
5911249035	Starterkit Assy		52	B	*
5911249037	Fuel Tank		59	B	*
5911240031	Fuel Tank Cap		60	B	*
5911249038	Igniter	ZD DV0130	61	B	*
5911249042	Exhaust gasket		64	B	*
5911249042	Exhaust gasket		65	B	*
5911249039	Flywheel		66	B	*
5911244008	fan wheel		67	B	*
5911244009	Motor Cover		70	B	*
5911244010	Motor Brake		71	B	*
5911244011	Starting Motor Assembly		72	B	*
5912311011	Carburetor Assembly	huayi DVO150 Ø16 Euro5	73	B	*
5911249053	Carburetor	huayi DVO150 Ø16 Euro2	73	B	*
5911246012	Temperature Control Switch		76	B	*
5911244012	Relay Assembly		79	B	*
5911249028	Crankshaft		82	B	*
5911249044	Gasket for Cylidner Head Cover		86	B	*



5911244903

Lawn mower MS150-46E scheppach - 3.7HP - 460mm



**Main products**

**Spare part list**

5911244903

155070 - 0162 - MS150-46E - alter Motor / alter Akku - bis 11 - 2020

<b>Spare</b>	<b>Description</b>	<b>additional</b>	<b>Item</b>	<b>Abb.</b>	<b>ConstructStatus</b>
5911249043	fuel filter		88	B	*
5911249045	Air Filter Foam		o.Abb.	B	*

!!! Do you know: From now on you can view spare parts lists in our spare parts shop and order spare parts and accessories directly. More information can be found here: <https://www.scheppach.com/Shop.aspx>